

\_Winter 2024.25

# п'яу

# piou

▲ 2600m





# Breathe, you are in high mountains

View of the Piau Engaly ski resort  
from near the Parc's slope





Safe freeride fun at Piau Engaly

**W**ith its unique natural snow cover, **PIAU IS THE SKI DESTINATION OF THE PYRENEES**, in a grandiose setting with its summits at 3000m.

In the heart of the most beautiful national parks, the National Park of the Pyrénées, Néouvielle's Natural reserve and the national Park of Ordesa-Monte Perdido, ski among isards in high mountains, surrounded by a rich and wild nature.

Piau Engaly's ski resort invites you in its natural setting, park your car, take the shuttle bus and enjoy most of your stay.



**A REAL SKI RESORT AT THE FOOT OF THE SLOPES, YOU CAN GO TO YOUR APARTMENT ON SKIS AND BACK.**



## **A MULTI CULTURAL DESTINATION**

**P**iau and its territory are twinned with Sobrarbe in Spain. The Aragnouet Bielsa tunnel links Aure's high valley to Bielsa's valley and offers you the opportunity to discover a new culture, new landscapes and new experiences.

In a few kilometers you arrive in the heart of the National Park of Ordesa-Monte Perdido.

You ski in the nordic area of Piau Pineta, without ski lifts and buildings, in nature ; you can also enjoy cross country skiing, snow shoeing, ice climbing and hiking.

Discover also the for mountain skiing and snowshoeing Ruego, with a ratrack system up to 2600 m.

**BE AMAZED BY THE MIXED TWO CULTURES, WITH TWICE AS MANY ACTIVITIES, VISITS AND GASTRONOMY.**

# Play & learn to ski...

**A**t your own speed, discover **THE BEGINNERS' ZONE AND THE DISCOVERY GARDEN** secluded from the rest of the resort, so you can progress in comfort and safety. Served by 5 ski lifts, 3 of which are equipped with anti-fall systems, and a gondola lift, gentle, wide slopes await you to start out and progress in complete peace of mind.

**THE COVERED CARPET** to serve the beginners' slope and the fun area offering snowtubing and the Adventure Course.

**THE FRENCH SKI SCHOOL (ESF)** welcomes you to learn skiing with a group or individual lessons, more information on site at the foot of the slopes.

**BEGINNER'S SKIPASS**

**32€** including access, Carpet school, Marmottes and Mouscades chairlifts.



## The DISCOVERY GARDEN

**W**hether you're on your own or accompanied, the discovery garden is the place to be for all families, with its snow garden, snowtubing, tobogganing, learn-to-ski trails and zip-line valley.

The whole area is surrounded by a pedestrian path and a relaxation zone for accompanying persons.

**+ NEW SLEDDING TRACK**

**NEW IN 2024**

A new free and safe sledding track offering several levels of fun for everyone!

**+ SNOWTUBING, MONKEY BRIDGE & ZIPLINES**

Take the pedestrian itinerary or the carpet and, aboard big buoys, hurtle down 1 snowtubing run over 140 m and the adventure course, laughter guaranteed!





# 140 days of skiing for riders

*From an altitude of 1700m to 2600m altitude Piau Engaly is the perfect ski resort for experienced skiers, mountaineers and enthusiastic skiers. 40 slopes protected from the wind with a milder temperature to offer you pure snow and an amazing scenery!*



## 4 GOOD REASONS TO SKI IN PIAU

### 02.

#### + PIAU'S VIEWPOINTS

For a picnic at the top, on our slopes map find all the tables which are setted in front of our most beautiful view on the ski area!

#### + A SNOWPARK, PIAU PARK

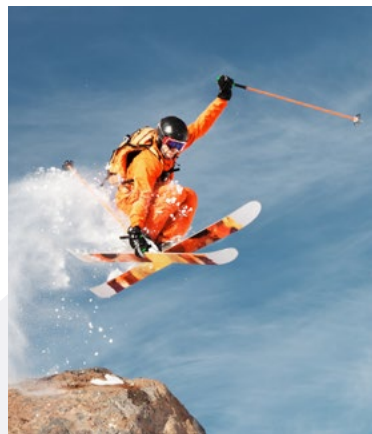
A nice line of fun and technical module, link kickers, rails or jib boxes on your run! Get creative and exceed your limits!

#### + 3 FREERIDE AREAS

For off-piste skiing addicts, easily available from chair lift, a DVA system to check your equipment and then you can leave your tracks in freshly fallen powder snow, and tackle the slopes safely.

**S**ki for all tastes: alpine skiing, cross country skiing, freestyle and freeride! Well-defined areas to ski at your own pace and enjoy your experience.

**A 125 HECTARES AREA, WIDE SLOPES, FROM GREEN TO BLACK LEVEL AND FUN AREAS,** where you will be able to take up challenges, discover new feelings and have more fun skiing.



### 01.

#### + LA GRANDE BLEUE

It's the longest blue run in the Pyrenees, with 6.9km of piste and a vertical drop of almost 800m, covering almost the entire resort from the top of the Pic de Piau to the Engaly chairlift. It's easy level, as it is blue, makes it accessible to all. A great way to enjoy beautiful panoramic views!

### 03.

### 04.



# 5 northern atmospheres in the south

## GUIDED SNOWSHOES HIKES

### + COUP DE CŒUR

Follow Jean-Pierre, local boy and mountain guide, into the magnificent Badet valley (Pyrenees National Park) to discover this exceptional natural setting, with its rich, unspoilt biodiversity and sublime landscapes.

Jean-Pierre also offers night-time snowshoe outings in the resort, where you can learn about night-time jobs and enjoy a glass of mulled wine. At altitude, the local flavors are all the better!







# RIDES IN DOG SLEDDING

## + SKI TOURING TRAIL

In an exceptional, safe setting, enjoy the physical effort of the ascent to the top and the pleasure of the rewarding descent!

Discover the *Bouquetins* slope, dedicated to ski touring.



## + NORDIC PEDESTRIAN TRAILS

**NEW IN 2024**

Non-skiers will now be able to share in the experience of the slopes thanks to new, specially-designed trails. After a chairlift ride to the top of TSF Campbielh, take one of the two new Nordic trails.

Along the way, enjoy spectacular panoramic views from the Badet and take a gourmet break at the Abri Snack.

## + DOG SLEDDING

Join musher Arnaud on an adventure with his pack of Alaskans, Huskies and Eurohunds.

After the slopes close, he leads us into the Badet valley. Comfortably seated, we discover the pleasures of dog sledding, in an atmosphere of the Great North... With family or friends, discover the world of dog sledding.

## + FATSCOOT

To try out new sensations, opt for a descent on a FatScoot, scooters with big wheels that grip the snow. Rendez-vous before the slopes open to board the chairlift at the same time as the ski patrollers.

Once at the top, you're off on these strange, stable machines, supervised by a state-certified instructor. The descent is a gentle one, across the untouched expanse, to the finish line, where you comfort yourself with a cup of hot chocolate!



# SKI TOURING



# A mountain of animations



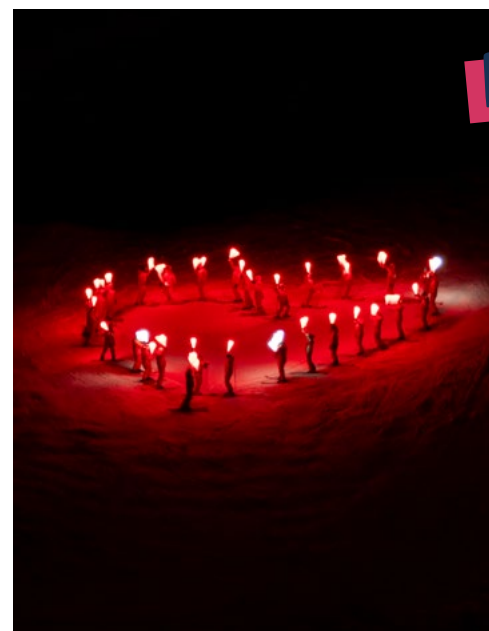
**ALL SEASON LONG, OUR ANIMATORS DAVID & YVAN AND OUR MASCOT SIFFLOTE ARE ON HAND TO LIVEN UP YOUR STAY!**

Our entire team is on hand to put a smile on the faces of children and adults alike, **DISCOVER THE SEASON'S MANY ANIMATIONS:** clowns, juggling, igloo building, torchlight descents, sled races, fireworks, Santa's arrival.

Meet our mascot, the Sifflothe marmot, and find out more about our unmissable events, for an unavoidable experience in the heart of the mountains.



## PIAU BY NIGHT



Discover our lively evenings in Piau-Engaly with musical entertainment and torchlight descents for young and old alike. Continue your evening at the shopping center with its restaurants to discover local flavors and lively evenings at the bar.

**EXPERIENCE YOUR MOUNTAIN HOLIDAY DAY AND NIGHT!**

*The entertainment program is available every week from the Tourist Office.*



# You said zen ?

## ÉDÉNÉO

*an oasis of wellbeing*

In the middle of the mountains in relaxation in the warm water with a view of the slopes, find an oasis of wellbeing **ÉDÉNÉO, THE AQUALUDIQUÉ CENTER** welcomes you in its playful pool of 130m<sup>2</sup>, hydro massage, bubble bath, musical cave, heated lounge, hammam and sauna for a relaxing time during your stay on ski.

**INTRODUCE YOURSELF TO AQUAGYM & AQUABIKE** to combine sport and wellbeing, or recover actively from a day on the slopes!

**THE CENTER OFFERS** revitalizing wellness **MASSAGES** to help you recover from a day on the slopes. But also a wide range of treatments and a natural, local range of *Ballot-Flurin* skincare products.



**Ballot-Flurin**  
*soins naturels*

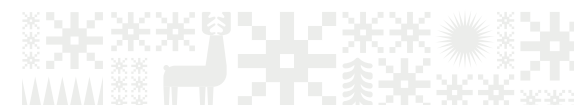
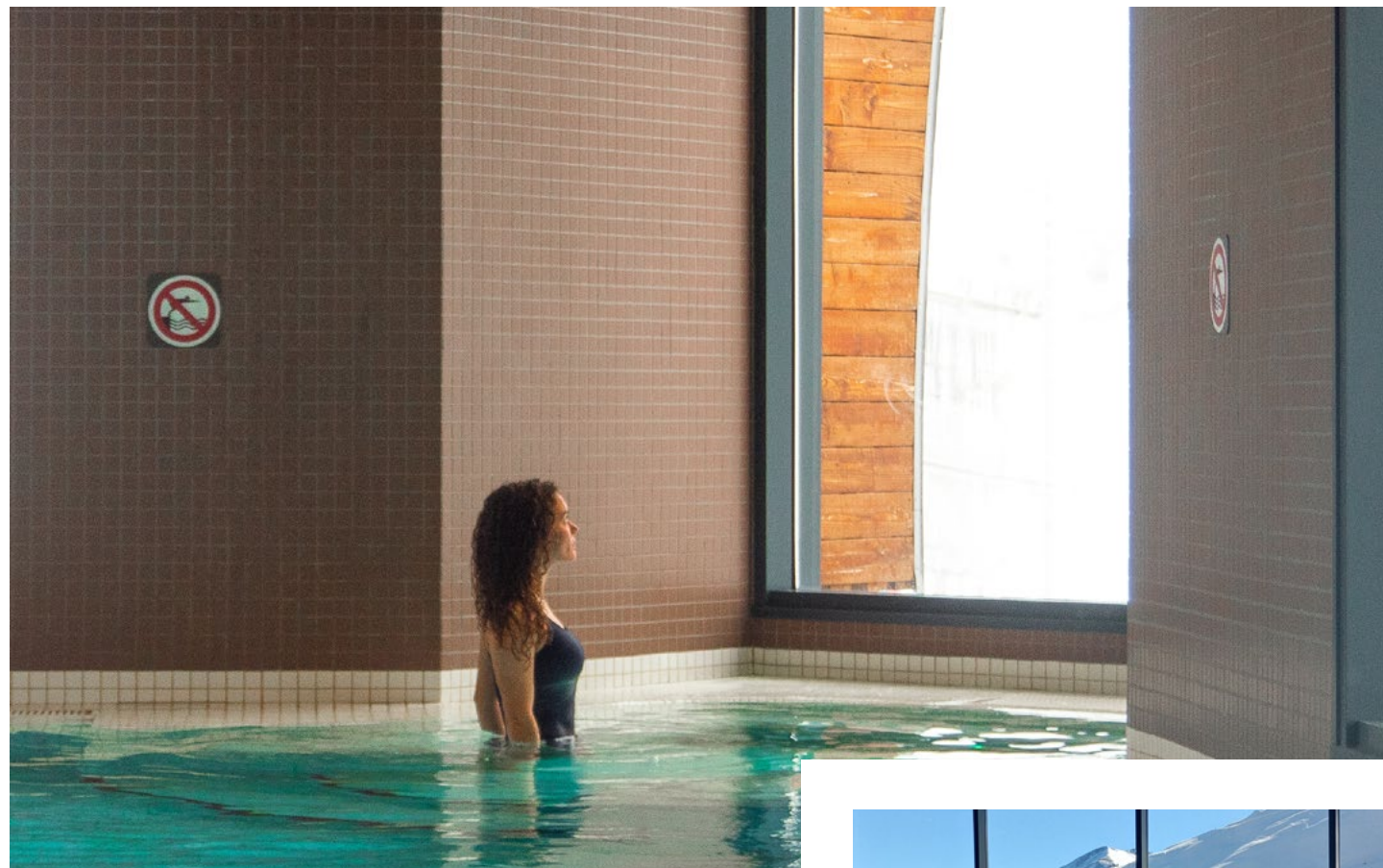
**EVERYTHING IS DONE TO TAKE CARE OF YOU!**

**SKIPASS + 2H ÉDÉNÉO**

From\*

**48.50**

\***Adult** > Skipass + 2h Édénéo : **57.50€**  
**Youth** > Skipass + 2h Édénéo : **48.50€**  
**Student** > Skipass + 2h Édénéo : **52€**





# cultural heritage



Saint-Pierre-aux-Liens Church  
(Éget village)

Chapel of Templars - Plan d'Aragnouet

Discover the riches of our region through its high mountain landscapes and religious edifices, including the Chapelle des Templiers, a **UNESCO World Heritage Site since 1998** as part of France's Pilgrimage Route to Santiago de Compostela.

The parish church of Saint-Pierre-Aux-Liens, nestled in the heart of the charming village of Éget, is also remarkable for its 13<sup>th</sup>-century murals.





# Local flavors

Discover local products at Piau's *Pain Enneigé* bakery, *Sherpa* grocery store and *Marmotte de Piau* shop.

**YOU CAN ALSO MEET LOCAL PRODUCERS AT THE PIAU MARKETS HELD EVERY WEDNESDAY DURING THE SCHOOL HOLIDAYS\***

A delicious opportunity to meet producers from the Aure valley



and neighboring Spain, and taste their artisanal products. You'll find charcuterie, cheese, meat and sweet products, as well as handmade decorations.

It's a convivial event that precedes the famous torchlight descents and fireworks display.

While skiers are hitting the slopes, **NON-SKIERS CAN TAKE ADVANTAGE OF THIS GOURMET PARENTHÈSE** to discover local flavors.

*\* Exception for the Christmas vacations, when they will take place on Mondays December 23 and 30.*



**A WIDE CHOICE OF RESTAURANTS IN THE PIAU SHOPPING CENTER OR IN THE VILLAGE OF ARAGNOUET WILL SATISFY THE EXPECTATIONS OF GOURMETS YOUNG AND OLD.**

*For the full list of local tables, see page 27.*





# Diary Diary Diary Diary Diary



## DEC. 25<sup>TH</sup>, 2024

### + THE SANTA CLAUS ON THE SLOPES

Santa Claus invites you, young and old, for a magical ride down the slopes in his magical sleigh! Join him as he makes his way down the slopes.

For the little ones and those who don't ski, he'll also be making the rounds around the resort. Be wise, he might just surprise you!



## FEB. 08<sup>TH</sup> > MARCH 09<sup>TH</sup>, 2025

### + THE CULTURAL FESTIVAL BY PIAU

The second edition of the Piau-Engaly Cultural Festival brings culture in many forms to the heart of the resort. For a month, photo exhibitions, meetings with illustrators and musicians follow one another.

For the duration of the event, you'll also be able to discover the ice grotto, featuring snow sculptures. Don't hesitate to push open the door to discover a magical show!

## FEB. & MARS 2025

### + THE MARMOT FESTIVAL

The must-attend event for holidaymakers during



the February vacations. Three editions are planned throughout the vacation period, so you can enjoy the event with the whole family: sporting challenges, discoveries and sweet tastings, you're sure to have a great day!

### 3 SESSIONS:

- > Sun. Feb. 16<sup>th</sup>, 2025
- > Sun. Feb. 23<sup>th</sup>, 2025
- > Sun. March 02<sup>nd</sup>, 2025

## FEB. 26<sup>TH</sup>, 2025

### + RÉTRO PIAU

A retro/vintage themed day on the slopes with lots of entertainment, DJ on skis, DJ at the foot of the slopes, parade, prizes to be won.

## MARCH 15<sup>TH</sup> 2025

### + THE PIAU DERBY

The great Pyrenees race for over 20 years. Fun, laughter and masquerade costume, who'll be the fastest



to reach the bottom of the resort from its summit?



## APR. 02<sup>TH</sup> > 04<sup>TH</sup>, 2025

### + THE PYRENEAN TRACKERS CHALLENGE

This challenge, organized by the Piau-Engaly trackers, brings together trackers from France, Spain and Andorra.

Three days of festive competition, with a succession of original and fun skiing events, and evenings with meals, drinks, concerts and entertainment open to all.





# MY DAY in the high Aure valley

**8.30 am** **The first tracks:** we set off accompanied by the trackers to be the first to take the Pic de Piau chairlift down the Grandé Bleue at sunrise. A magical way to start the day (Monday to Friday during vacations and weekends outside vacations).

And **for non-skiers**, there are new Nordic itineraries to discover the resort on foot.

**12 am** After a morning on the slopes, it's time for a meal! Head for the **Belvédères de Piau for a picnic** in the fresh air from the summits. Elsewhere on the slopes, the **Abri-Snack**, located at the Piau laquette, serves delicious local hot dogs. We can't resist one made with Bigorre black pork!

**2 PM** Take part in **one of the many activities** offered in turn by David and Yvan at the discovery garden : laser game, circus arts, family games, igloo building, laser biathlon and so much more to have fun in the mountains!

**5 PM** Relax in the **Edénéo whirlpool baths**, enjoy a massage, treatment or sauna outside, facing the mountains.

**7 PM** Start the evening enjoying the hypnotic spectacle of the **torchlight descent** with a glass of mulled wine. Continue the program in the warmth of one of the **resort's restaurants or bars** for the more festive!

# Your accommodation

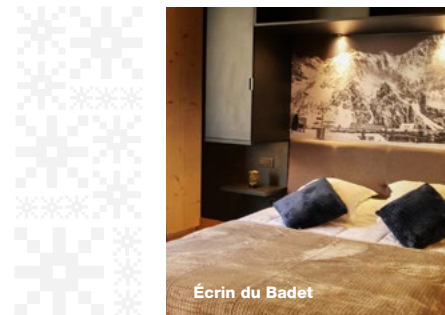
*It has never been easier to book your accommodation with Piau Reservation! Thanks to our travel advisors, you will be directed to the best offers of the moment, contact us!*



Auberge de Piau

**NEW IN 2024**

This winter, a new 4-stars residence, **Le Cristal de Piau**, opens at the foot of the slopes. Based on the same model as l'Écrin du Badet, the innovative concept is based on the modularity of the 57 apartments, allowing you to play with different sleeping capacities. Sauna, hammam, indoor heated swimming pool and direct access to the ski slopes provide every comfort.



Écrin du Badet

**PIAU RESERVATION**  
> **+33 (0)5 62 39 61 69**  
[infos@piau-engaly.com](mailto:infos@piau-engaly.com)





# Piau's useful report



Take advantage of our shopping center at the foot of the piste for all your shopping needs!

The village of Aragnouet is the perfect complement to this shopping network, so you'll never be short of anything!



## SHOPS

- **Edénéo** (spa)
- « **La Marmotte de Piau** »  
(Tobacco - FDJ - Souvenir store - Bookshop...)
- **Bakery** « Le pain enneigé »  
(bread, pastries, cake, sandwich, local products...)



- **Pharmacy** (open 7/7)
- **French Ski School** (ESF)
- **Minimarket** «Sherpa»  
(food, butcher's...)
- **Launderette**  
(open 7/7)

## SKI RENTAL & SNOWSHOES

- Ecoski
- Pow Pow Piau
- Piau ski
- Sport 2000 Ligne Blanche
- Intersport

## BARS & RESTAURANTS

### ► ON SITE:

- Cafeteria **L'Engaly** / +33 (0)5 62 39 61 33
- Brewery **L'Ours Brun**  
/ +33 (0)5 62 39 62 94
- Snack of local products **L'Abri Snack**
- Pizzeria **Le Yeti** / +33 (0)5 62 39 68 29
- Restaurant **Le Refuge du lys**  
/ +33 (0)5 62 39 61 98
- Restaurant-Pizzeria **L'Edelweiss**  
/ +33 (0)5 62 39 69 23 or +33 (0)6 79 76 28 02
- Restaurant **La Cueva**  
/ +33 (0)6 25 46 95 84
- Restaurant **L'Auberge de Piau**  
/ +33 (0)5 87 03 00 87
- Restaurant **La Table à Tonton**  
/ +33 (0)9 79 44 03 94

### ► IN ARAGNOUET VILLAGE:

- Restaurant **Le Relais du Néouvielle**  
/ +33 (0)5 62 39 02 43

## USEFUL PHONE NUMBERS

- Civic centre **+33 (0)5 62 39 62 63**
- Tourist office **+33 (0)5 62 39 61 69**
- Doctor's surgery **+33 (0)7 63 87 26 23**
- Pharmacy **+33 (0)6 36 09 19 29**
- Post office **+33 (0)5 62 39 61 69**
- Police **+33 (0)5 62 39 62 98**
- Kindergarten **+33 (0)5 62 39 69 84**





# Slopes map

## LEGEND

- |  |  |                         |                   |
|--|--|-------------------------|-------------------|
| EDENEO (Balneo center)   | First aid station  | Freeride area           | Beginner area     |
| Picnic/panorama (Piau's viewpoints)  | Automatic Ticket office  | Snow park               | Ski area          |
| National Park of the Pyrenees  | Free Shuttle stop  | N'PY Moov area          | Ski touring slope |
| Toilet   | Viewpoint indicator  | Mountain ski area       | Sled slope        |
| Restaurant   | Camper van area  | Slalom stadium          | Snowtubing slope  |
| THE MAIN BUILDING: Tourist office, Piau Réservation, Free WIFI, picnic room, kindergarten, ticket office, cash machine, doctor's surgery, post office. | FastPass reserved for subscribers No Souci, Premium & Illimité seasons | Nordic pedestrian zones | Discovery garden  |

## 40 SLOPES

- 5 GREEN (Easy level)
- 19 BLUE (Medium level)
- 9 RED (Difficult level)
- 7 BLACK (Very difficult level)

**> RESCUE ON THE SLOPES**  
**+33 (0)5 62 39 69 89**  
 (Don't forget to indicate the name of the track and the nearest marker' number).

**> TOURIST OFFICE**  
**+33 (0)5 62 39 61 69**





# ski resort MAP

## REACH US

### + AIRPORTS

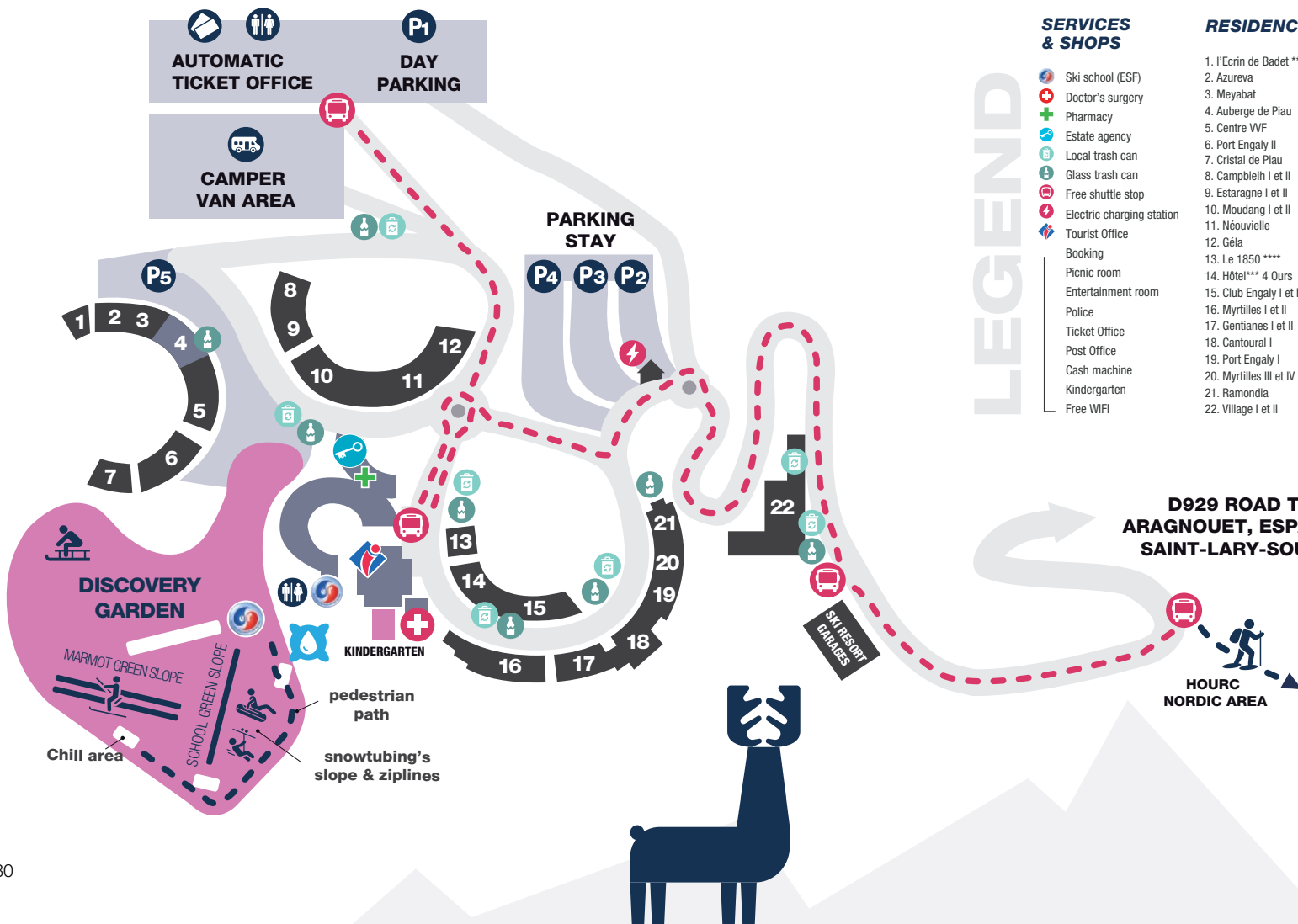
- Toulouse > 2h25
- Tarbes/Lourdes > 1h35
- Pau > 1h56

### + TRAIN STATIONS

- Toulouse >
- Lannemezan > 1h40
- Tarbes >
- Lannemezan > 25mn
- Pau >
- Lannemezan > 1h08
- + BUS link
- Lannemezan >
- Saint-Lary Soulan > Piau > 1h45

### + CAR

Highway A64, exit 16 >  
55 mn from Lannemezan



## LEGEND

### SERVICES & SHOPS

- 🎿 Ski school (ESP)
- 👨‍⚕️ Doctor's surgery
- 🏠 Pharmacy
- 🏠 Estate agency
- ♻️ Local trash can
- ♻️ Glass trash can
- 🚗 Free shuttle stop
- ⚡ Electric charging station
- 🗺️ Tourist Office
- 📅 Booking
- 🍷 Picnic room
- 🎮 Entertainment room
- 👮 Police
- 🎫 Ticket Office
- 💰 Post Office
- 🏪 Cash machine
- 🎒 Kindergarten
- 📶 Free WIFI

### RESIDENCES

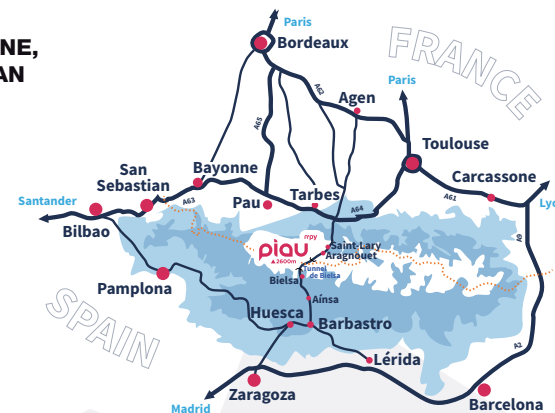
1. l'Ecrin de Badet \*\*\*\*
2. Azureva
3. Meyabat
4. Auberge de Piau
5. Centre WF
6. Port Engaly II
7. Cristal de Piau
8. Campbielh I et II
9. Estaragne I et II
10. Moudang I et II
11. Néouvielle
12. Géla
13. Le 1850 \*\*\*\*
14. Hôtel\*\*\* 4 Ours
15. Club Engaly I et II
16. Myrtilles I et II
17. Gentianes I et II
18. Cantoural I
19. Port Engaly I
20. Myrtilles III et IV
21. Ramondia
22. Village I et II

- Residences
- Shops, service\*
- For children
- Parking area
- Traffic lanes
- 🚰 Balneo Center
- 🏠 Welcome building

\* Bakery, Supermarket, Newspaper store / Tobacco, Launderette, Ski rental, Restaurants & bars.

D929 ROAD TO  
ARAGNOUET, ESPAGNE,  
SAINT-LARY-SOULAN

HOUC  
NORDIC AREA







# Engaly piau

▲ 2600m



IP - OEE - PIAU - GODES STOCK / OLLIER / PIRESCHEVALLES OT PIAU BOZAL / PIAU / SWITZERSON

[www.piau-engaly.com](http://www.piau-engaly.com)

[infos@piau-engaly.com](mailto:infos@piau-engaly.com)



station de Piau



@Piau-Engaly



Piau-Engaly



@piauengaly



Piau-Engaly



GRANDS  
SITES  
Occitanie  
SUD DE FRANCE



Offices de  
Tourisme  
de France



Jemins de  
COMPOSTELLE  
patrimoine mondial

Historique du site et de sa  
Tour d'observation d'exception,  
des chalets des touristes  
engalyens

